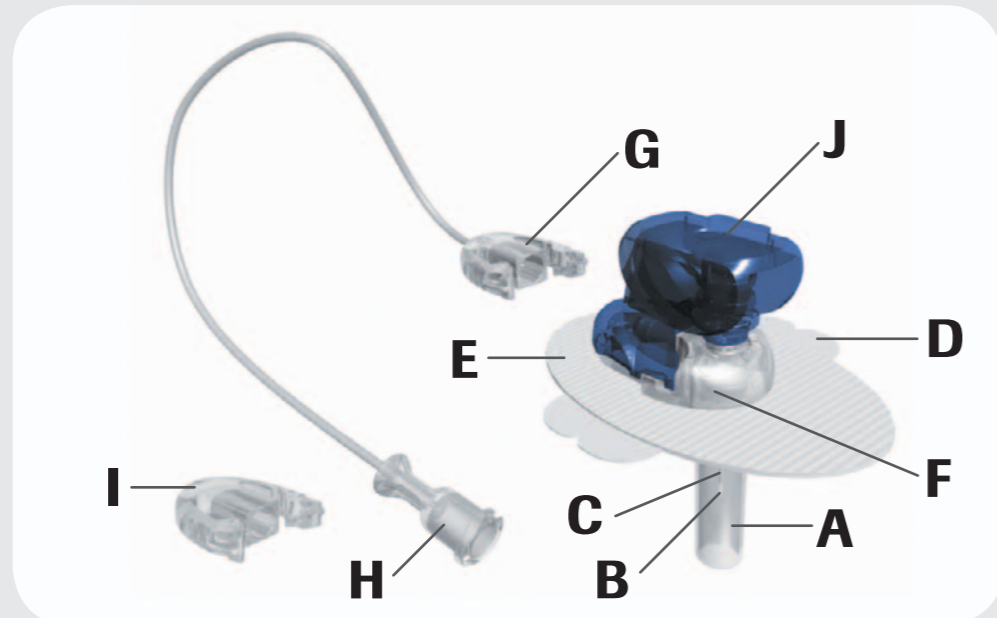


Accu-Chek® FlexLink Training Chart

The Accu-Chek FlexLink infusion set is intended for the subcutaneous infusion of insulin.



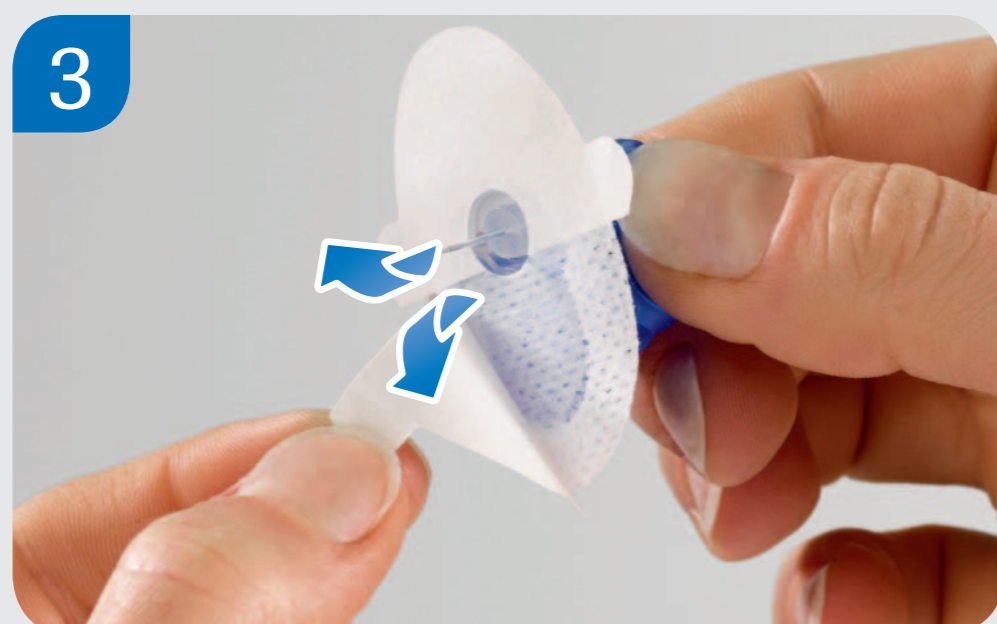
- A** Protective cover
- B** Introducer needle
- C** Soft cannula
- D** Adhesive backing
- E** Self-adhesive
- F** Canula housing
- G** Connector
- H** Luer-lock
- I** Disconnect cover
- J** Blue holder cap



1 Before unpacking your infusion set, wash your hands thoroughly. Choose and disinfect your infusion site as instructed by your doctor or healthcare team.



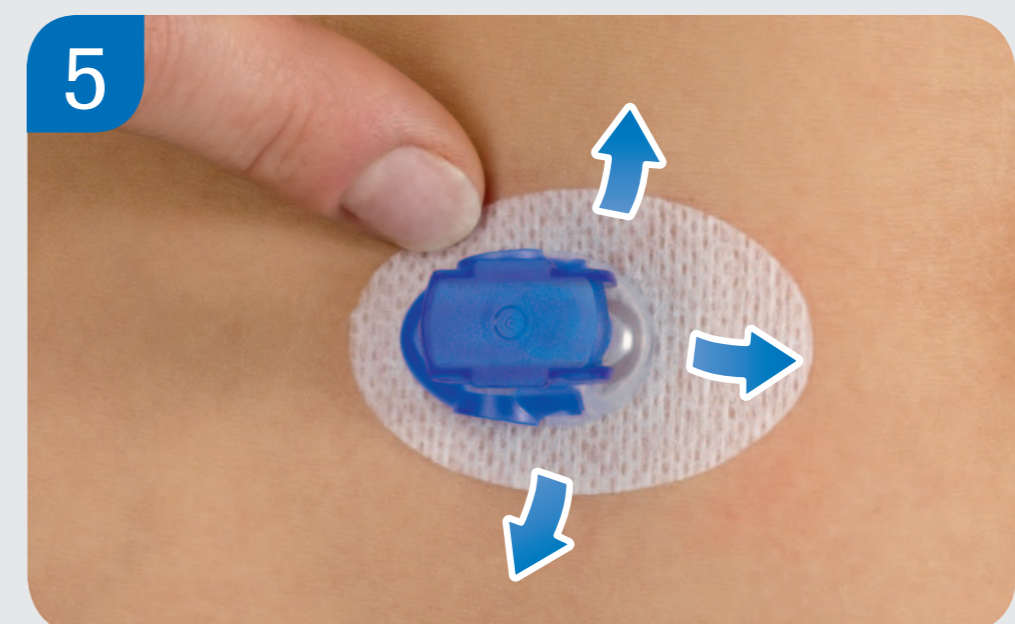
2 Turn and pull to remove the transparent protective cover.



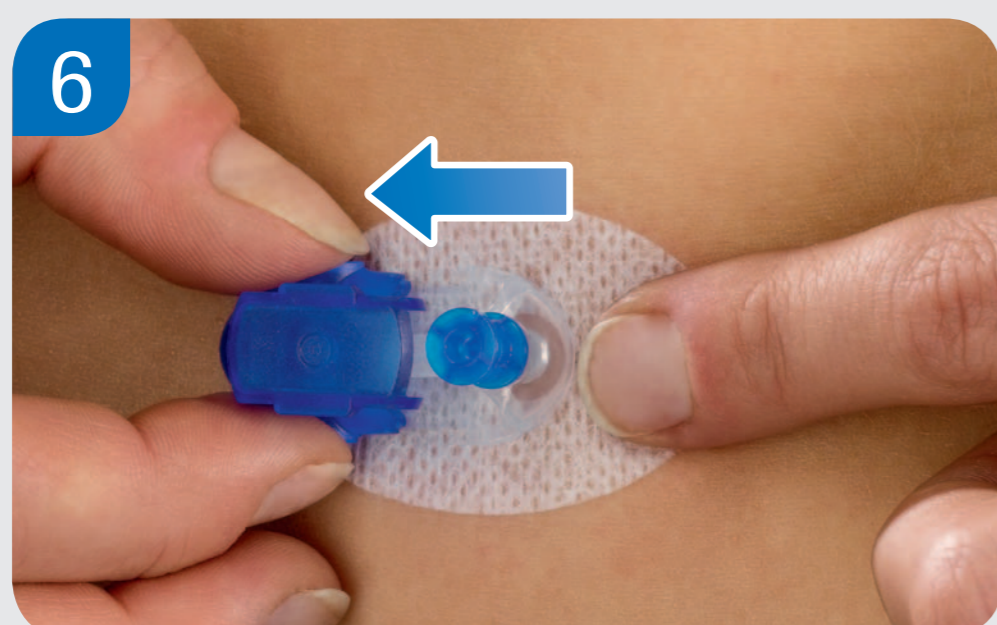
3 Remove both pieces of the adhesive backing from the self-adhesive.



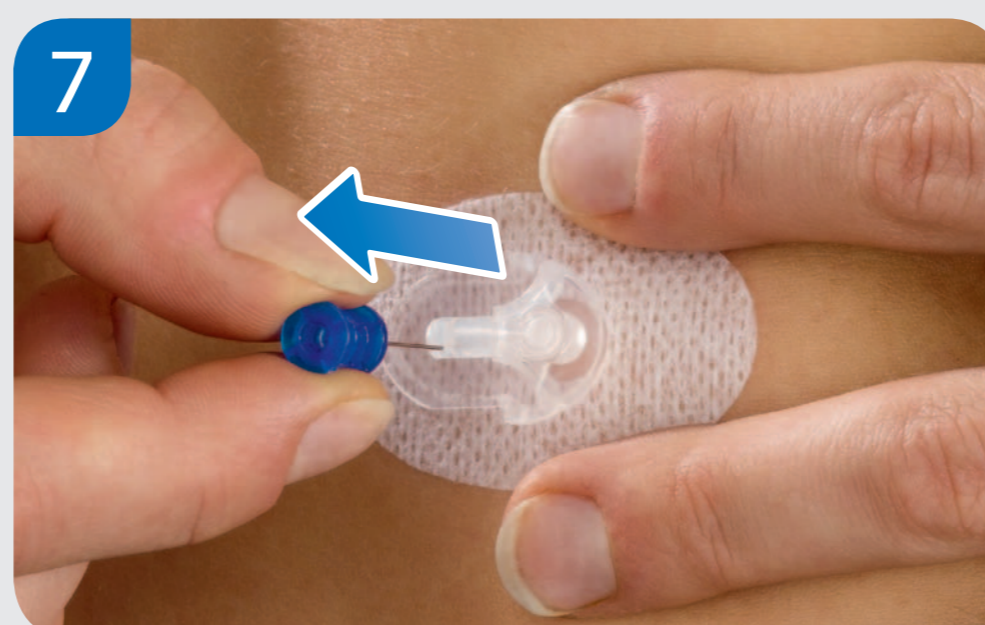
4 Insert the infusion set at a 90° angle. Choose an infusion site away from your waistline, bones, any scar tissue, belly button and recent infusion sites.



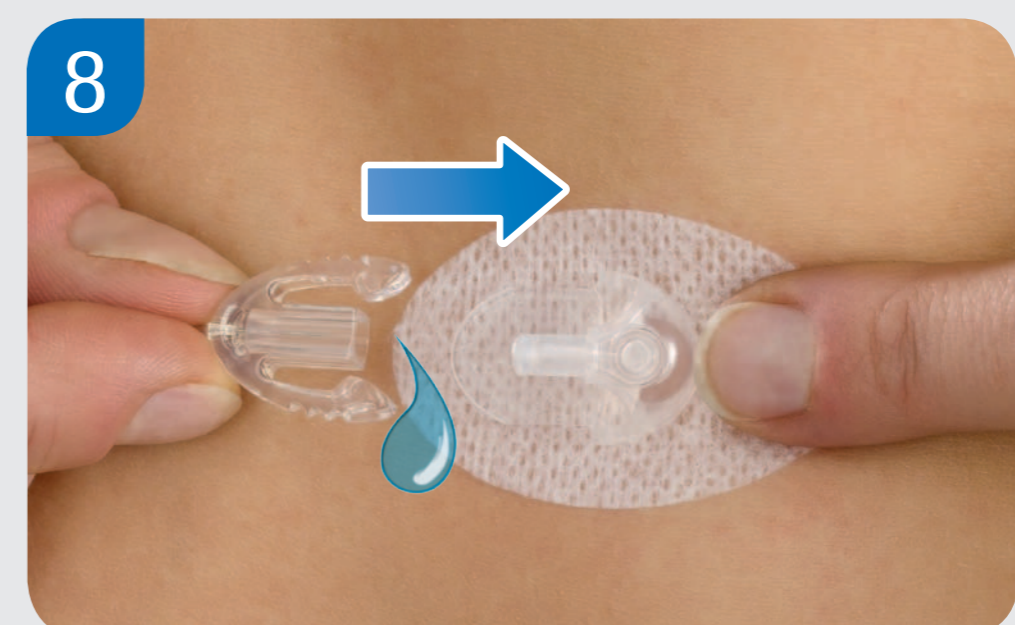
5 Press the adhesive plaster firmly onto the infusion site, ensuring that it makes good contact with the skin.



6 Hold the self-adhesive in place, gently press the side clips of the blue holder cap and pull it from the cannula housing.



7 Hold the cannula housing firmly to your body. Use the handle to withdraw the introducer needle in a right angle.



8 Connect the primed transfer set to the connector plate. Before resuming insulin pump therapy, use an insulin bolus of 1.0 U to fill the head set and the soft cannula.

Cannula	Length:	6 mm	8 mm	10 mm	
	Prime volume:	1,0 U*	1,0 U*	1,0 U*	
Tubing	Length:	30 cm 12 "	60 cm 24 "	80 cm 31 "	110 cm 43 "
	Prime volume:	6 U*	11 U*	14 U*	18 U*
					* U 100 insulin

For detailed instructions and important safety information, please consult the instruction accompanying this product.

Experience what's possible.

ACCU-CHEK and ACCU-CHEK FLEXLINK are trademarks of Roche.
© 2012 Roche Diagnostics



www.accu-chek.com
Roche Diagnostics GmbH
Sandhofer Strasse 116
68305 Mannheim, Germany

ACCU-CHEK®