

START HERE

QUICK START GUIDE

⚠ WARNING



Risk of suffocation

This product contains small parts that can be swallowed. Keep the small parts away from small children and people who might swallow small parts.

Risk of a serious health incident

Incorrect operation of the meter and lancing device can lead to serious health problems or damage.

This Quick Start Guide is not a substitute for the full User's Manuals supplied with the meter and the lancing device.

Be sure to observe the safety information in the User's Manuals. Read the package insert which comes with the test strips.

Risk of infection

There is a risk of infections being transmitted if the lancing device is used by other people, even family members, or if healthcare professionals use this lancing device to obtain blood from more than one person.

The Accu-Chek Softclix lancing device is intended for personal use only!

It must not be used for obtaining blood from more than one person. The lancing device is not suitable for professional use in healthcare facilities or institutions.

Risk of infection

Any object coming into contact with human blood is a potential source of infection.

For professional use of the meter you must observe the information for healthcare professionals (see the *Testing in More Than One Patient* chapter of the User's Manual of the meter).

Overview: Meter and Test Strip



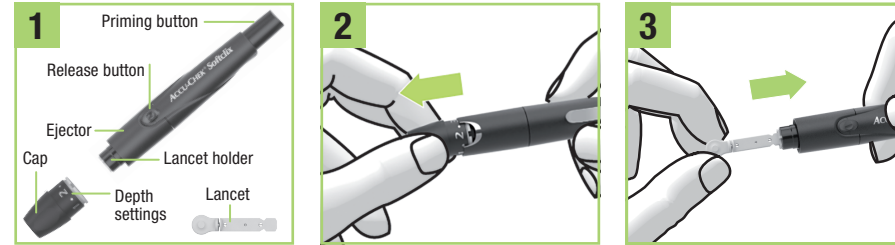
- 1
- 2
- 3



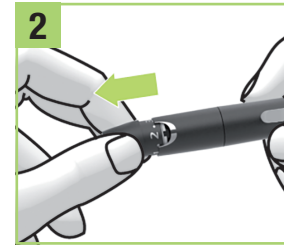
- 1 Display
- 2 Buttons
- 3 Test Strip Guide
- 4 Test Strip

Familiarize yourself with the Accu-Chek Active meter. Read the package insert which comes with the test strips.

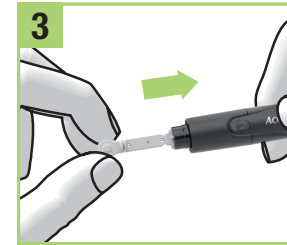
Preparing the Lancing Device



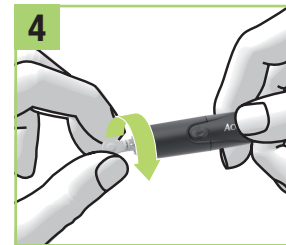
Familiarize yourself with the Accu-Chek Softclix lancing device.



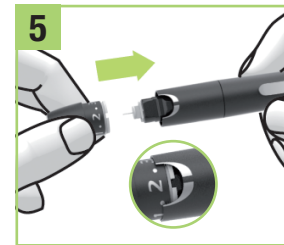
Remove the cap from the lancing device.



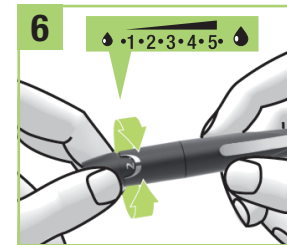
Insert a new lancet in the lancet holder. The lancet must audibly click into place.



Remove the protective cap from the lancet with a twisting motion.



Place the cap back on the lancing device again. The cap must audibly click into place.



Rotate the cap until the desired penetration depth is set. Start with a low penetration depth setting such as 2.

⚠ WARNING

Risk of infection

Used lancets are not sterile anymore.

Always use a new lancet when you obtain blood. In doing this, you reduce the risk of infection, and obtaining blood remains virtually pain free.

NOTE

If you need additional help with your Accu-Chek Active meter or your Accu-Chek Softclix lancing device, contact customer support.

Last update: 2021-07



ACCU-CHEK and SOFTCLIX are trademarks of Roche.

© 2021 Roche Diabetes Care

Roche Diabetes Care GmbH
Sandhofer Strasse 116
68305 Mannheim, Germany
www.accu-chek.com

PDF eckerts3 - Jul 12, 2021

Approved according to SHR SOP 04.07.08 Att. A Vers.4.9 **Kat. 03**
The Signature will not be printed!

GD/LAY eckerts3 - Jul 12, 2021

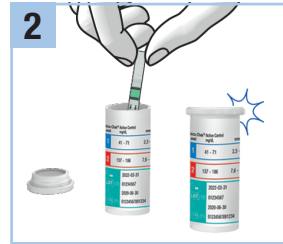
PM/LAB obermans - Jul 14, 2021

LAN tsifisa - Jul 13, 2021

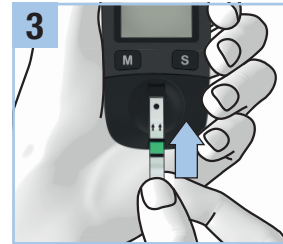
Testing Blood Glucose



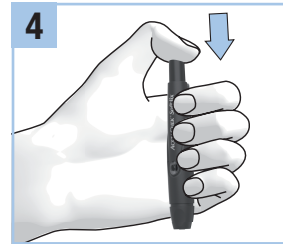
1 Wash your hands with warm water and soap. Dry your hands well before you obtain blood.



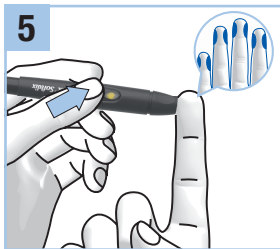
2 Remove a test strip from the test strip container. Close the cap tightly.



3 Without bending it, insert the test strip into the test strip guide in the direction of the arrows.



4 Press down the priming button as far as it will go. The lancing device is primed when the middle of the release button is yellow.



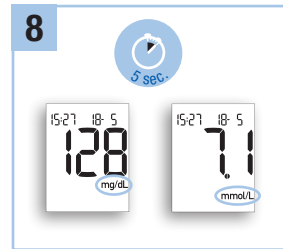
5 Press the lancing device firmly against the chosen puncture site on the side of a fingertip. Press the yellow release button.



6 When the flashing drop symbol appears on the display: Apply the blood drop to the center of the test area (green square).

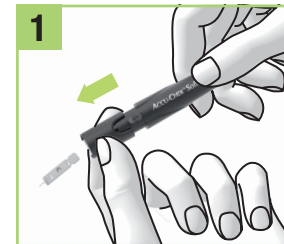


7 The flashing hourglass symbol indicates that the test is in progress.



8 After approx. 5 seconds, the test result appears on the display and the meter beeps.

Disposing of the Lancet



1 Remove the cap from the lancing device. Slide the ejector forward. The used lancet is ejected from the lancing device.

⚠ PRECAUTION

Risk of infection

The needle of a used lancet is not protected and can be touched accidentally. To prevent infections from being transmitted, dispose of a used lancet in such a way as to prevent injury from the needle.

Place the cap back on again.

Error Messages

If an error occurs, follow the following instructions. Turn the meter off. Depending on the situation, you can turn the meter off either by pressing the M button and S button at the same time or removing the test strip from the meter.

E - 1 Hold the test strip so that the arrows printed on it and the test area face upwards. Without bending it, insert the test strip into the test strip guide in the direction of the arrows. You must feel the test strip lock into place.

OR

Repeat the blood glucose test or control test with a new test strip.

OR

Clean the measurement window.

E - 2 Repeat the blood glucose test or control test with a new test strip.

E - 4 Remove the USB cable and repeat the blood glucose test or control test with a new test strip.

E - 5 Change your position or turn the source of electromagnetic radiation off.

E ± 5 Go to a shaded place or shade the meter, for example with your body.

EEE Repeat the blood glucose test or control test with a new test strip. If the error message appears again, the meter is defective. Contact customer support.

EEt Ensure that the ambient temperature is between +8 and +42 °C and wait for the meter to adjust to that temperature.